



# ANIMAL CRUELTY PREVENTION SEMINAR

4<sup>th</sup> February 2016

Conrad Hotel

*The Equine Perspective*

Bev Gibbons

# Mahatma Gandhi

*The greatness of a nation and  
its moral progress can be  
judged by the way its animals  
are treated*

# Animal Abuse

- **World wide**
- **Any nationality**
- **Any culture**
- **Any socio-economic group**
- **The extremists**

# Why?

- Ignorance
- Economic hardship
- Cultural heritage
- Deliberate cruelty
- Loss of interest

# Ciganos – Gypsies



# What do they need?

- Supply of fresh clean water
- Sufficient food for their body size for maintenance
- Suitable exercise or work
- Well fitting harness or saddlery
- Correctly balanced hoof, trimmed or shod
- Teeth checked
- Wormed
- Stabled or paddock?

# Overweight



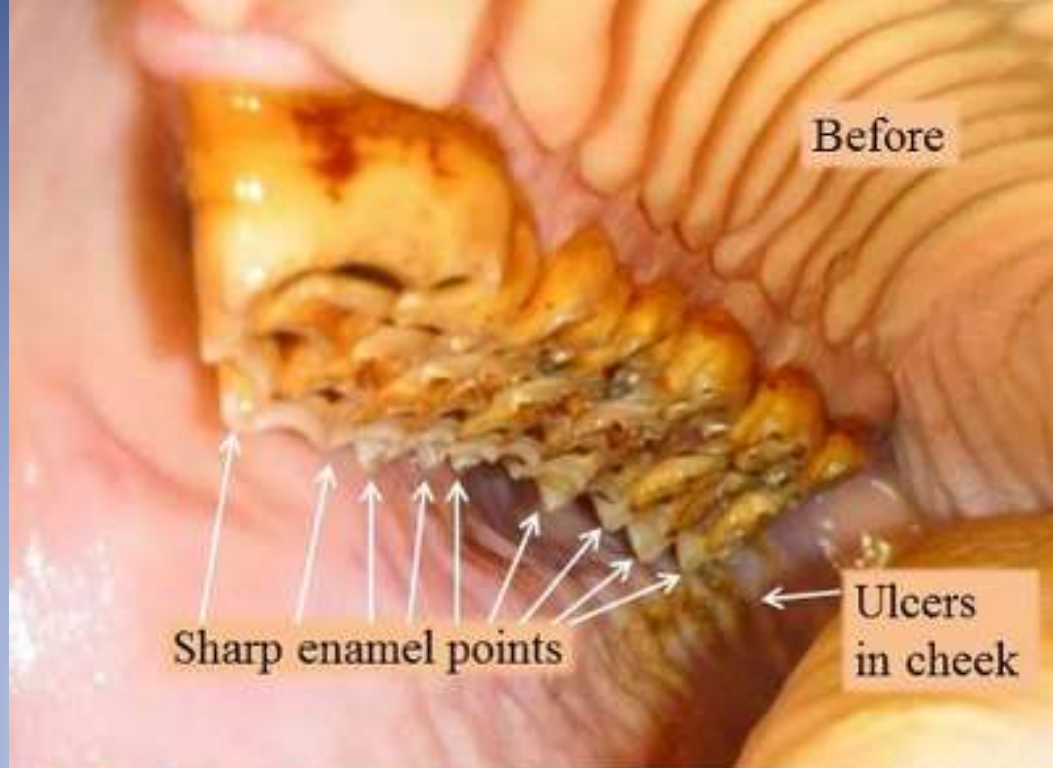
# Thin horse





# Hoof Care – extreme case





# What can you do?

- Communication
- Help
- Education
- Report
- Support charities & associations

[www.arc-horsewelfare.org](http://www.arc-horsewelfare.org)



# Refúgio dos Burros - Estômbar



- T: 927336096
- e-mail:  
refugioburros@gmail.com

# The Laws

- Understanding of the existing laws by the public and the authorities
- Means to remove an animal if necessary
- A safe place to put them and economic support
- Prosecution where applicable
- Modification of laws or new laws if required

# Rehabilitation

- Assessment of the situation
- Practical and possible?
- Team work by Vet, farrier, trainer, carer...
- Costs .v. Time
- Euthanasia
- SIRCA T:**217 541 270**

08.00 – 20.00 EVERY DAY

# Guarda Nacional Republicana (GNR)

Loulé 289 410 490

Almancil 289 351 530

Quarteira 289 310 420

Vilamoura 289 381 780

Salir 289 489 136

Alcoutim 281 546 208

Silves 282 440 290

Lagoa 282 380 190

Albufeira 289 583 310



# SEPNA – 808 200 520

free call - 24 hours a day

## *Local numbers:*

Albufeira 961 193 295

Sagres 282 624 316

Portimão 282 420 750

Silves 282 440 290

Loulé 289 410 490

Faro 289 887 600

Tavira 281 329 030

e-mail on [sepna@gnr.pt](mailto:sepna@gnr.pt).

# Obrigada

